

Designing Your Own Christmas Cards & Note Cards

Fred Born, DVM

Course Goals

To discover how to design your own Christmas &
Note Cards with two different approaches.

First – Use a simple tracing technique to develop a black and white Christmas card design and use this same technique to design attractive note cards with little effort.

Second – Develop a full color Christmas card, using a digital camera, then produce beautiful photo note cards.

These notes will offer clear-cut guidelines to help you with the project of your choosing.

Printing Christmas Cards & Note Cards with Your Computer

Supplies:

White Card Stock Paper (110 lb.)

Cost \$ 9.99/250 sheets (The card stock paper (8½ in. by 11in.) is cut in half to the size of the finished (8 ½ in. by 5 ½ in.) card size. 2 cents/card

Invitation Envelopes – White - (24 lb.)

Envelope size - 4 3/8 in. by 5 ¾ in.
Cost \$12.99/100 envelopes 13 cents/each

Cost of this process runs:

- a. Black & White photo/drawing 2 cents/card
- b. Colored photo/drawing est. 8 cents/card
- c. Plus the envelope – 13 cents each

Total cost of B/W card 15 cents/card

Total cost of colored card est. 21 cents/card

Advance Black & White Christmas Card Design

This technique is for everyone, even if a person doesn't think he can draw.

Description of the Card Size

First, establish the size of your designed card to fit in a standard available envelope. As an example:

The card size of 5 ½ in. by 4 ¼ in. will fit a standard invitation envelope size of 4 ¾ in. by 5 ¾ in.

This card size is half a standard letter size (8 ½ in. by 11in.)

Details of Design

Select a Christmas card design you find appealing, in color or in black and white.

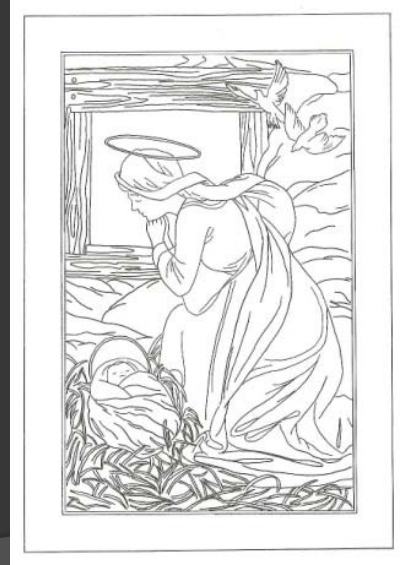
Enlarge copy of the Christmas card to a size of approx. 5 ½ in. by 8 ¼ in. (approx. 140%), using a copy machine.

Use a tracing box or an outside window. When using an outside window, use Scotch Drafting Tape, it will not damage your copy.

Trace the drawing in pencil as you see fit.

At this size, one can draw your design in pen and ink with the freedom of developing a clean design.

With the copy enlarged 140% from the original design (on the left) now trace the design which you prefer (on the right).



Draw your design in pen and ink.

With a copier, reduce your design approx. 100% or the card size of 5 ½ in by 4 ¼ in.

Card making process:

1. Scan your reduced design to your computer,
2. Set the printer to print on letter size paper, but you will be using the half sheets of card stock.
3. The picture to be used will be turned (90 or 180 degrees) to fit on the card. This will make sense when you do this the very first time.
4. Print setting of "four 9 cm. by 13 cm." on a full letter size (8 ½ in. by 11 in.) setting.

Advantage to This Approach

1. By enlarging the design, it is easier to draw in the details.
2. With the enlarger drawing, one can minimize many of the smaller errors.

The smaller design appears cleaner.

Advance Approach Using a Digital Camera

To make digital photo Christmas cards, there are some simple steps you must follow:

1. Select a photo that is colorful and the details are very sharp.
2. For cards that fold on the left, turn the photo 180 degrees.
3. For cards that have the fold at the top, turn the photo 90 degrees.
4. Using letter size (8 ½ in. by 11in.) setting on your printer, select “four 9 cm. by 13 cm.” with this setting your photo will be in the center of the front of your card.

The picture to be used is now turned (90 degrees) to fit on the card.

Print setting for 4-up 9cm. by 13cm. on a 8 ½in. by 11in. setting.



For this card, the photo is positioned to fold at the top of the card. This would be your format for cards running widthwise.

Page five

If you are looking for a printer, here is a good example:

HP Officejet All-In-One Printer - Model 6500 – cost under \$100 at Staples

- a. Prints excellent color photos on plain paper.
- b. Ink cartridges are reasonable in cost.

Summary of the card making process:

Scan the picture you want to use, using a color or black & white or choose a photo from your picture album on your computer.

Set the printer to print on letter size paper, but you will be using the half sheets of card stock. Have found cutting the letter size pages in half ahead of time, the printing process moves more quickly.

For digital photo Christmas or Note cards, I suggest using the Double-sided matte Photo Paper, instead of card stock. Results in better quality color photos and you will have good heavy paper for a card.

That completes our program. Relax and try this new fun technique in drawing. Share it with your family and friends.

You will amaze yourself in how well you can draw.

Have Fun!