

Graduate School - The Who, What, When, Where, Why, How: Part I



Deciding
Preparing
Selecting
Being There

DECIDING



- Why go to graduate school?
- Is graduate school a good idea in this economy?
- Is graduate school right for you?
- How is graduate school different from undergraduate studies?
- Do I go to graduate school somewhere else or where I was an undergrad?
- Should I go to graduate school right after I finish my undergrad degree?

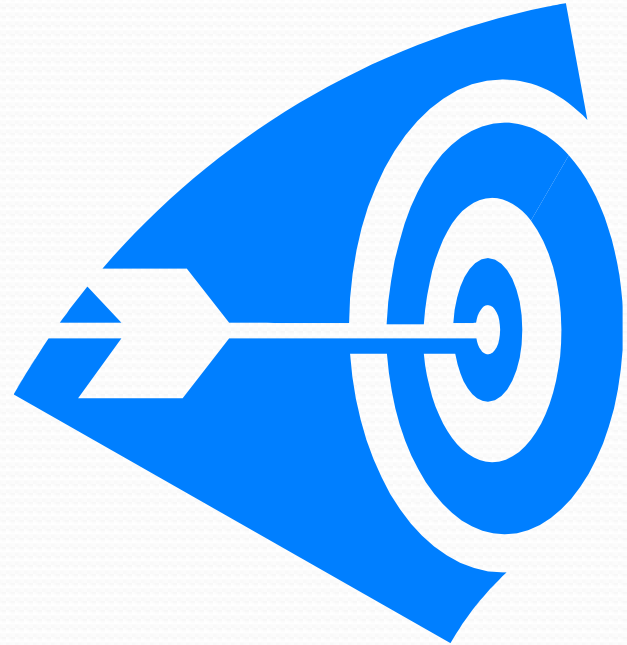
PREPARING



- What can I do as an undergrad to get ready?
- Can my graduate program be different from my undergraduate major?
- Does it help to take graduate classes before going to graduate school?
- Does work experience help me get into graduate school?
- Other Questions?

SELECTING

- What should I consider?
 - Program considerations
 - Geographic considerations
 - Research considerations
 - Faculty considerations
 - Employment considerations



BEING THERE



- What's it like?
- Can I attend part-time? Full-time?
- How many credits is a full load in a semester?
- When are classes held---day, evening, weekends?
- How many students are in a typical class?
- How many credits does it take to get a graduate degree?
- Can I work while going to graduate school?
- Is there a time limit for completing a degree?
- Other questions?
- Finally...if you go, go hard and make the most of it!

Graduate School - The Who, What, When, Where, Why, How: Part II



Applying
Testing
Writing
Financing

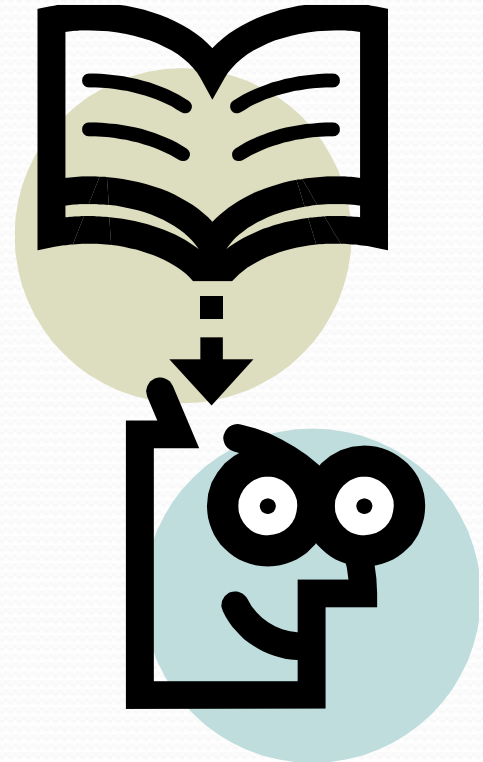
APPLYING

- Applying for Admission
 - Samples: [Oshkosh](#), [Harvard](#), [Madison](#), [UNLV](#)
- Submitting Official Transcripts
- Providing Test Scores, Personal Statements, Essays, Letters of Recommendation, Other
- Preparing Portfolio (if needed)
- Preparing and Being Interviewed (if needed)
- Some Other Resources
 - [Univ of Pittsburgh](#)
- Other



TESTING

- GRE – Graduate Record Examination
 - General and Subject
- GMAT – Graduate Management Admission Test
(gmac.com)
- MAT – Miller Analogies Test
- LSAT – Law School Admission Test
- MCAT – Medical College Admission Test
- Test Preparation
 - Kaplan
 - The Princeton Review
 - Educational Testing Services (ETS)





WRITING

- Personal Statement
 - About.com: All about the Graduate Admissions Essay
 - The Writing Center @ Rensselaer
- Essay
 - Example: Reflect on public administration as a threat to or enhancement of liberty, efficiency and equality.
 - UW Oshkosh Writing Center
- Resume (Sometimes Curricular Vita – CV)
- Letters of Recommendation

FINANCIAL AID

- Loans
- Assistantships, Fellowships, Internships, Traineeships, Employment
- Grants, Scholarships
- State Residency
- Demographic, Nationality, Ethnicity, Associations qualifiers
- Other



RESOURCES/INFORMATION



Financial Assistance

- http://www.uwosh.edu//fin_aids/
- <http://www.fafsa.ed.gov/>
- <http://www.petersons.com/finaid/file.asp?id=780&path=ug.pfs.financial><http://www.fastweb.com/>
- <http://www.scholarshiphelp.org/index.htm>
- <http://www.finaid.org/>
- <http://www.fedmoney.org/>
- <http://www.jkcf.org/scholarships/graduate-scholarships/>
- <http://www.estudentloan.com/>
- <http://www.fastweb.com/>
- <http://www.scholarstuff.com/netguide/financial-aid.htm>

RESOURCES/INFORMATION



General

- <http://www.petersons.com/Default.asp?ShowTab=gr>
- <http://www.gradsource.com/>
- <http://www.graduateschools.com/>
- <http://www.gradschools.com/feedback/hbk.html>
- [http://www.quintcareers.com/considering graduate school.html](http://www.quintcareers.com/considering_graduate_school.html)
- <http://www.gradschooltips.com/>
- <http://polaris.gseis.ucla.edu/pagre/grad-school.pdf>

SOURCES

- Selected information in this presentation obtained from the following:
 - CollegeBoard
 - Northern Arizona University
 - Samford University
 - University of Pittsburgh
 - University of Washington

