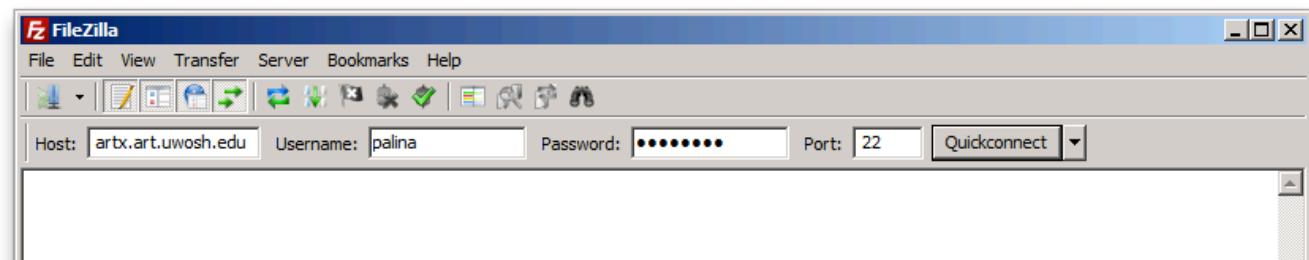


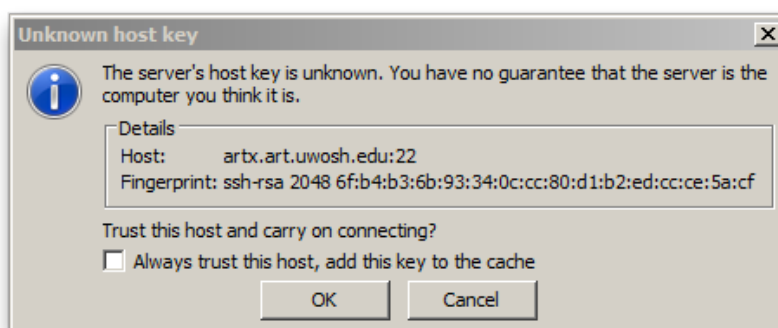
Connecting Remotely to ArtX With a PC

To connect to ArtX from a PC, you will need to install a SFTP client. One of the best free clients available is FileZilla, available at <http://filezilla-project.org>. Download the appropriate version of the client for your operating system.

After installing the software, run FileZilla and fill in the appropriate boxes to connect, as illustrated below. Your Username and Password are the same ones that you would use to log in to a computer lab iMac.



Upon your first successful connection, you will be presented with the dialog box below. It is your decision as to whether or not you want to permanently add the SSH key to your cache. The chances of a man in the middle attack to ArtX are slim, but better safe than sorry.



You will then be connected to your home folder on the right side, with your local hard drive and files on the left. You can navigate through the directory trees to locate and drag & drop whatever files you wish to transfer.

There are other free SFTP clients available, each with their own sets of features and benefits. A brief list of clients, and short reviews of those clients, is available here: <http://bit.ly/S4naSu>