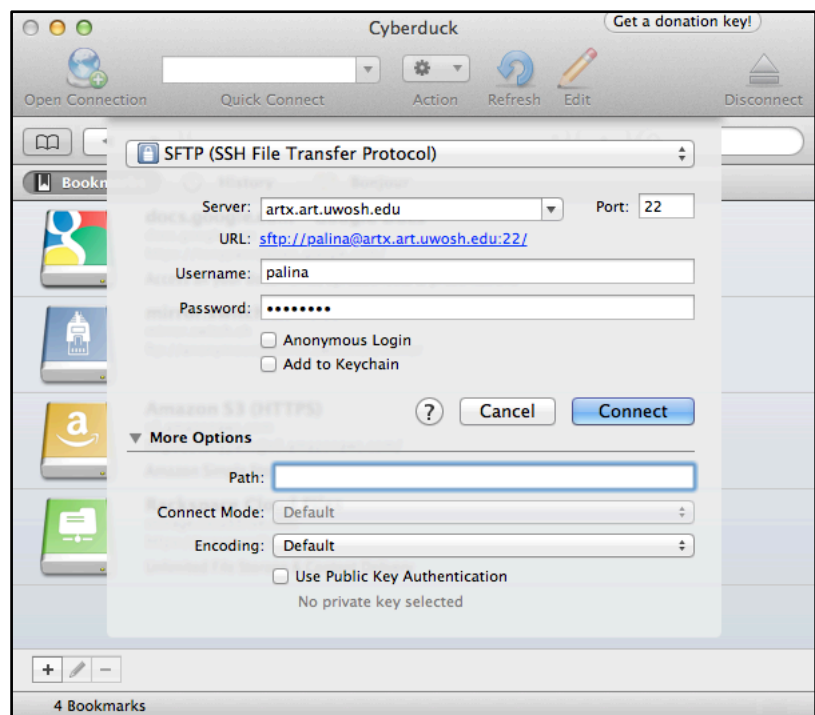


Connecting Remotely to ArtX With a Mac via SFTP Using CyberDuck

While on campus, if you connect to the Internet using TitanWiFi and want to access your files from ArtX, you will need to use access them via SFTP using a client like CyberDuck. CyberDuck can be found at <http://cyberduck.ch/>. Go there, download the latest version, and install it on your computer.

Then, start up CyberDuck and click the "Open Connection" button in the upper left of the resulting window. You should then enter the server name and your login credentials so that your window looks similar to that shown below. *Be sure to select SFTP from the pull-down menu at the top of the sheet; normal FTP connections will be rejected.*

Once connected, you will be presented with the same list of folders/files that you see if you were to open a new Finder window to your Home folder in the lab. If you want to connect to the instructor Dropboxes enter "/Volumes/Other_Data/Shared Items/Dropboxes" (no quotes) into the Path: field under More Options or just navigate to that path using the pull-down menu showing your current directory.



CyberDuck does allow you to edit files "Live" by way of temporarily downloading them and uploading the changes to the server upon saving. However, this method of editing isn't really recommended for InDesign documents with links to external files because InDesign will not resolve the location of those links on the server. *The default action when double clicking a file in CyberDuck is to download that file to your "Downloads" directory.* Therefore, it is probably good practice to drag-and-drop files or entire folders from the CyberDuck window to your local Desktop or desired location for editing.