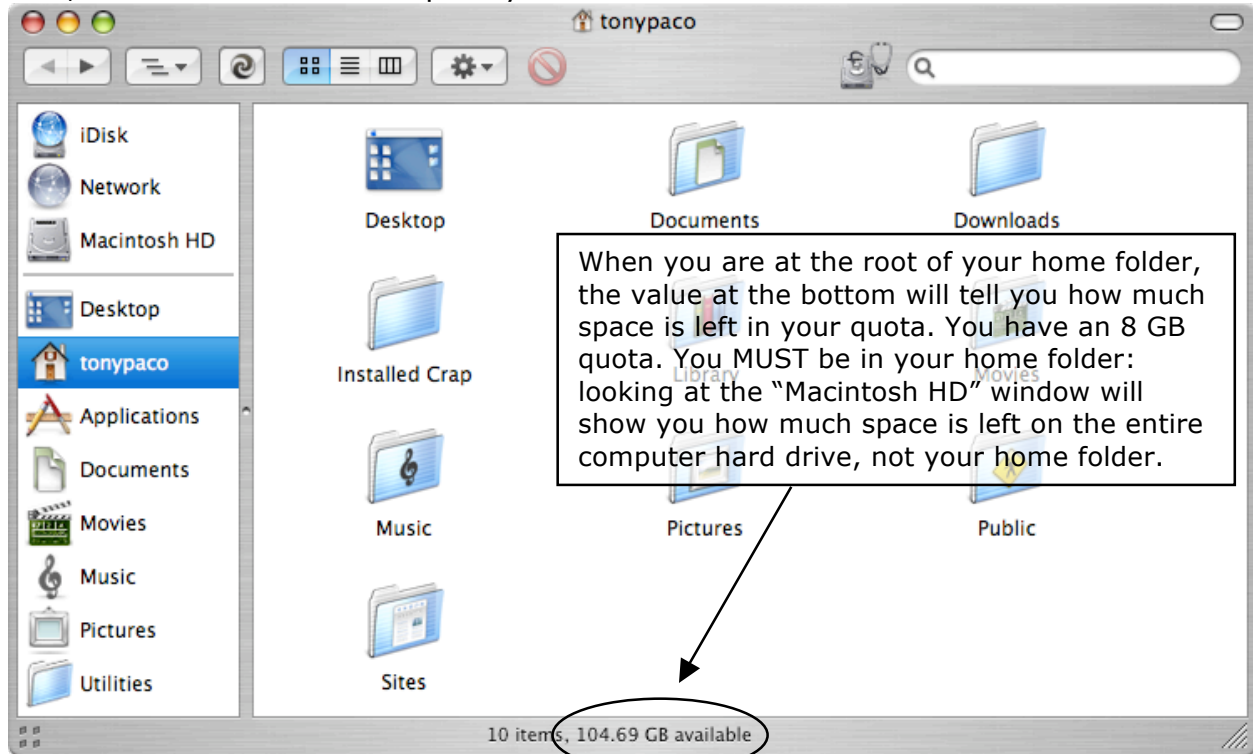


Backing up to a Disc to Create More Space on the Server

Many, many problems occur when you run low or out of room in your home folder. Moving files to optical media (CD or DVD) will create space in your home folder and will make computing much, much easier.

First, determine how much space you have available:



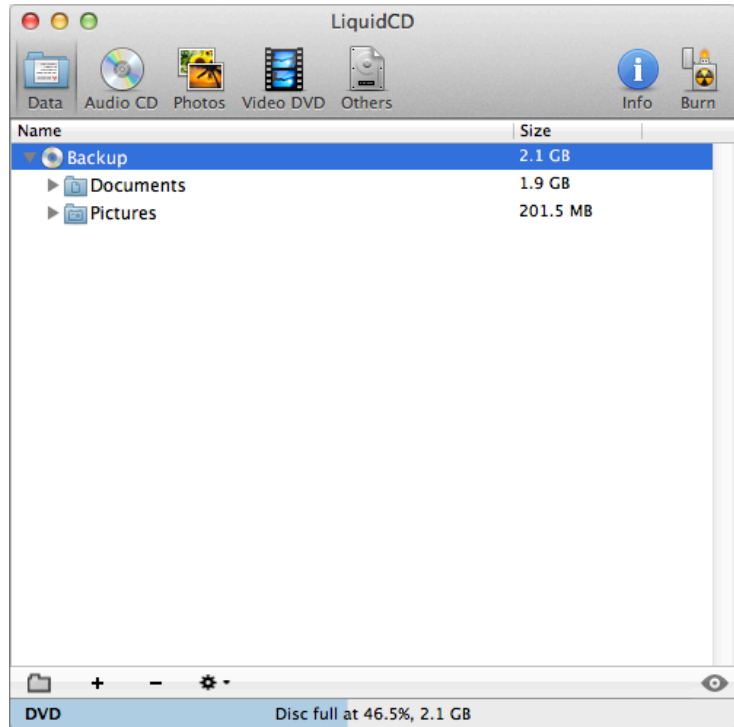
It is a good idea to allow at least 500 MB available for temp files. You can work with less, but that is dependent on whether or not you are using Adobe proprietary file formats for your graphics or using export file formats (i.e., if you are importing PSDs and AIs instead of TIFFs and/or EPSs, you will need more temp file space).

Once you've determined that you need more room, burning a disc is imperative. You can obtain a disc from your instructor: there are spindles of CDs and DVDs in the Lab Tech office. CDs will hold approximately 700 MB; DVDs will hold 4.3 GB.

There are two methods for burning media: the Finder drag and drop way or the LiquidCD interface way. The Finder way, though "easy", leaves a bit to be desired in the way of control. You put a disc in, you tell the Finder to "open" it, you drag files to it, then it burns when you eject it.

One word of note: DO NOT DRAG YOUR HOME FOLDER FROM THE FINDER SIDEBAR IN AN ATTEMPT TO BURN IT TO DISC. The sidebar is just a place for shortcuts. You will not actually move anything to the disc; you will simply delete the shortcut with a poof and then I'll be getting an email or a note in the log about how your home folder is gone.

If you wish to burn via the LiquidCD method, navigate to the Applications folder and double click on the LiquidCD program. You will be presented with an interface window reminiscent of Roxio Toast (Those familiar with Toast can probably stop reading here; if you've seen one disc burning app's window you've seen them all...)



The folder button at the bottom of the window will make more folders within your Disc Project (it will also make the initial CD directory if you have yet to drag data into the window). The Plus and Minus buttons should be self-explanatory for all college students. In lieu of the Plus button, you can drag files/folders onto the window and they will be added to the Disc Project. The Gear/Cog button gives you the option to save your project as a Disc Image. If you do choose to save as a Disc Image, choose the ISO Disc Image format unless you really, really want to save it as a Cue/Bin set (if you don't know about Cue/Bin's, you don't wanna know about Cue/Bin's, so don't use Cue/Bin's). As seen in the above graphic, you can also burn Audio, Video and Photo discs. When you finally arrange your data, click the burn button, put in your blank disc (if not already in), and select your burn speed. I haven't done many tests with this software with regards to its burning performance when pulling data from the network. To play it safe, you should select the "Best" speed for burning and let the program determine the bandwidth and pick the appropriate speed for the burn.

Regardless of the method you use for burning, you should always verify your burn, both with the burning program and your own manual method. My manual method of verification is opening the "Wasteland" folder at the root of "Macintosh HD" and copying my disc back down to the computer hard disc. If you don't get a copy error, you have a good disc. You usually don't have to copy everything; a few folders here and there will surface most burn errors.

Questions/comments/complaints/queries can be sent to my email address.